



39 Ritchie Road  
Pallara Qld 4110  
P: (07) 3727 4222  
E: [admin@pallarass.eq.edu.au](mailto:admin@pallarass.eq.edu.au)  
[www.pallarass.eq.edu.au](http://www.pallarass.eq.edu.au)

## Welcome to Pallara State School!

We are delighted that you're considering enrolling your child at Pallara State School for 2026. Changing schools is an exciting time, and we're here to support you and your family every step of the way.

This year, we are encouraging all families to complete their enrolment applications online. Instructions on how to do this are provided below to make the process as simple and convenient as possible. Please note that Pallara State School is an enrolment managed school. This means we are only able to accept applications from families who reside within our designated catchment area. If you require assistance with enrolling or filling out the enrolment application online, **please contact the office to organise a time to come in**. We look forward to welcoming you and your child into our school community and beginning this important journey together.

We have included an **"Enrolling at Pallara Checklist"**. This will help to ensure you have all the required documentation ready and make the online process quick and easy.

### Follow these easy steps to enrol:

1. **Visit the Enrolment Page on our school website**

👉 Go to: <https://pallarass.eq.edu.au/enrolments/enrolling-at-our-school>

2. **Complete the Online Application**

You will be required to upload proof of residency and the enrolling student's Birth Certificate here.

3. **Submit Your Application**

Once submitted, the school will contact you regarding the next step

---

### 📁 What's Inside This Enrolment Pack:

- 🏠 Information on the New Prep & Year 1 Campus (Opening 2026)
- 💻 BYOD Minimum Specifications & Recommended devices
- ✅ Steps to joining the BYOD Program
- 🧑 Everyday Counts Pamphlet
- 👕 School Uniform Policy



**PALLARA**  
STATE SCHOOL

39 Ritchie Road  
Pallara Qld 4110  
P: (07) 3727 4222  
E: [admin@pallarass.eq.edu.au](mailto:admin@pallarass.eq.edu.au)  
[www.pallarass.eq.edu.au](http://www.pallarass.eq.edu.au)

## Enroling at Pallara checklist

Please upload all primary and secondary evidence  
plus birth certificate.

All evidence must be uploaded/provided  
For the enrolment application to be accepted

Before starting the enrolment, ensure you have the following forms of evidence ready to upload with your application		Parent Check list
<b>Primary Evidence</b> Current proof of residence stating your residence in the Pallara State School Catchment Area <ul style="list-style-type: none"> <li>• <i>Brisbane City Council Rates Notice (own property) or</i></li> <li>• <i>Tenancy Agreement (rent property) or</i></li> <li>• <i>Contract for House (buying property)</i></li> </ul>		
<b>Secondary Evidence</b> Current proof of residence stating your residence within the Pallara State School Catchment Area <ul style="list-style-type: none"> <li>• <i>Utility Bill (Water, Gas, Electricity, Internet) or</i></li> <li>• <i>Australian Driver's Licence or</i></li> <li>• <i>Australian Proof of Age Identity Card</i></li> </ul>		
<b>Student's full Birth Certificate</b> <ul style="list-style-type: none"> <li>• If student was born overseas please include student's passport &amp; visa</li> </ul>		
Within the Online Application form you will see the below agreements and policies. You will be able to read and sign for these electronically within the application.		Parent Check list
Application for Student Enrolment Form		
Enrolment agreement		
Internet Agreement		
Uniform Policy		
BYOD Charter & Class Dojo Photo Permission		
Digital Consent via QParents		Parent Check list
An invitation will be sent for QParents once the enrolment is approved. The parent/caregiver will be required to register and complete the following consent forms		
State School Consent Form (media/photo/name use)		
Student Resource Scheme (SRS) participation agreement		
Online Services Consent Form		



## A New Chapter for Prep and Year 1 Students in 2026



Pallara State School has long been a cornerstone of our local community, offering a high-quality education in a supportive environment. With rapid growth in the area and a steadily increasing student population, we are proud to announce the construction of a new campus, scheduled to open in 2026. This campus will specifically cater to Prep and Year 1 students, ensuring that our youngest learners have the best possible start to their educational journey. From Year 2 and on students will continue their education journey at the current main campus located at 39 Ritchie Road.

### **A Historical Connection**

The new campus will mark a return to Pallara State School's roots. Until 2016, the original school site located at 282 Ritchie Road served as the heart of our community, where students began their educational path. Beginning from 2016, the school relocated to its current site at 39 Ritchie Road to accommodate the growing community and provide a more expansive learning environment. Now, as the area continues to grow, the decision to create a dedicated campus for Prep and Year 1 students is a natural and essential step in ensuring our young learners receive focused and specialised education. The new Prep and Year 1 campus will be built on the original school site located at 282 Ritchie Road.

## Why is the New Campus Needed?

Pallara has seen significant residential growth in recent years, leading to a notable increase in the number of families in the area. As the local population continues to expand, the demand for educational spaces, particularly for our youngest students, has risen. The new campus will provide a tailored learning environment for Prep and Year 1 students, where they can thrive in a space specifically designed for their developmental needs.

By dedicating an entire campus to our early years learners, we can offer a more personalised and nurturing environment for young children to grow, learn, and explore.

## What the New Campus Will Offer

The new campus, set to open in 2026, will provide a welcoming, purpose-built space for our youngest students, featuring:

- **Dedicated Prep and Year 1 Classrooms:** Specialised classrooms designed to meet the unique needs of early learners, ensuring a safe, engaging, and supportive environment.
- **Additional and Refurbished Facilities:** All classrooms, Administration building, Tuckshop, and other facilities will be newly built - the existing BER (Building Education Revolution) buildings, the Resource Centre and Hall that were built in 2009 will undergo refurbishment to ensure they are fit for purpose and meet current standards.
- **Age-appropriate Facilities:** Playgrounds, outdoor learning areas, and recreational spaces designed specifically for younger children, encouraging both physical activity and social interaction.
- **Focus on Early Development:** A strong emphasis on building foundational skills in literacy, numeracy, and emotional development, setting a strong educational base for the years ahead.
- **A Return to Our Origins:** While the main school site remains at 39 Ritchie Road, this new campus will bring us full circle, offering a location just for our early years learners, harking back to the days when Pallara State School served the community from its original site.

## A Vision for the Future

The opening of this new campus for Prep and Year 1 students in 2026 is a critical step in ensuring that Pallara State School continues to meet the educational needs of the local community. By focusing on the early years, we can give our youngest students a strong start, with an environment designed to nurture their growth and prepare them for the future.

As we look forward to this new chapter, we remain committed to providing the best possible education for all of our students, from their first day in Prep to their final year at school. This expansion reaffirms our commitment to the Pallara community and ensures that we can continue to support the needs of our growing population.



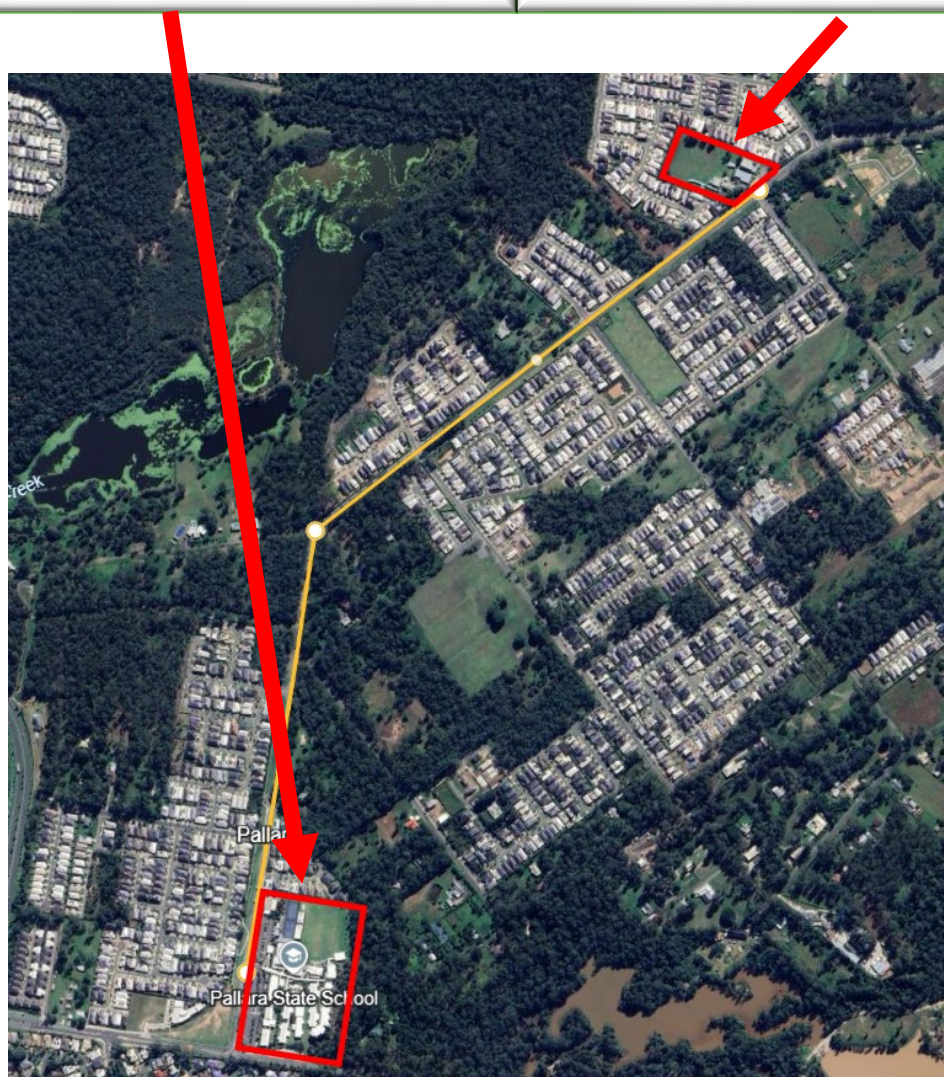
# Site Plan:



# Location:

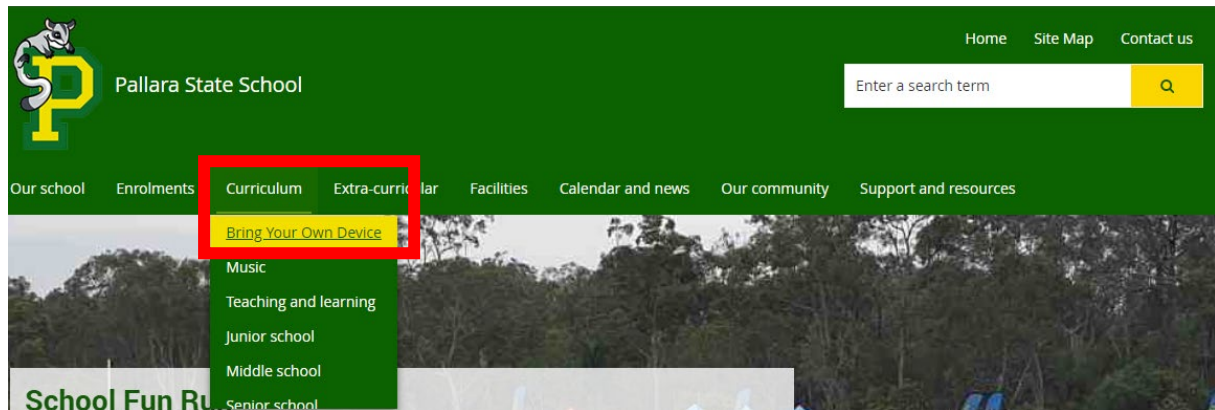
**Pallara State School – Year 2 to Year 6 Campus**  
39 Ritchie Road, Pallara, QLD, 4110

**Pallara State School – Prep to Year 1 Campus**  
282 Ritchie Road, Pallara, QLD, 4110



# The 4 steps to joining the BYO Program

Information in this document referred to as “on our website” is found at.  
**Pallarass.eq.edu.au > Curriculum > Bring Your Own Device**



## Step 1

**View the parent information session – On our website under “1. Joining the program”) to download and view the session PowerPoint.**

Information included in the information session PowerPoint:

- What is BYOD?
- What are the educational benefits?
- How does BYOD work?
- What are the student and parent responsibilities?
- Which laptop meets the minimum specifications required?
- Laptop selections and accessories required

Face-to-face information sessions happen in Term 4. Dates will be emailed out at the end of Term 3, early Term 4.

## Step 2

**Read, sign and return the BYOD Charter in your enrolment pack**

The Charter:

- Charters are supplied in your enrolment pack. The back page needs to be signed and returned to the school office
- Students cannot join the network without this signed and returned

## Step 3

### **Purchase a Laptop, Laptop bag, Corded Headphones (Cordless headphones will not work with NAPLAN) and Cordless Mouse**

There are pre-selected laptop options available through vendor portals on our school website under “3. Laptop Selection”. These vendors offer educational grade laptops that meet or exceed the minimum device specifications.

Laptops offered through Learning With Technologies ([pallara.orderportal.com.au](http://pallara.orderportal.com.au)) all are educational grade laptops that come with a 3 year on-site warranty and optional Accidental Damage Protection (Please read their Terms and Conditions before purchasing). Laptops purchased through here can have warranty requests organised by the school on your behalf. Learning With Technologies also offer great value on required accessories, such as sturdy laptop bags, headsets and computer mice.

The laptop offered through One-Education ([one-education.org](http://one-education.org)) – The Infinity laptop – Is a great option as it is built tough and has been used at schools across Australia with great outcomes. The device is offered at a competitive price point and comes with a 2 year Return to base Warranty. Pallara State School has a great relationship with One-Education and can at times offer servicing on your behalf if you have purchased this laptop.

Laptops offered through The School Locker ([theschoollocker.com.au/schools/pallara-state-school](http://theschoollocker.com.au/schools/pallara-state-school)) offer laptops at a discounted rate if you register for Student Advantage Pricing.

More information about laptops and the vendors can be found on the website.

It is vital that laptops purchased meet the minimum specifications required. Devices that do not meet this specification may not work on our network. There is a “minimum device specifications” sheet in your enrolment pack.

If you do decide to purchase a device from a local shop or other online retailer, please take the minimum device specification sheet with you and ensure that you **do not purchase Microsoft Office or any Anti-Virus**. More information about this can be found on our website under 2. BYOD FAQ.

## Step 4

### **Prepare your students new device prior to being brought into school.**

There are guides on our website under “1. Joining the program” for you to be able to join your devices at home before attending school. There are 3 guides available depending on how confident you are in setting your device up. You can start on the guide that is relevant to you.

Guide 1: Setting up a brand-new device straight out of the box

Guide 2: Setting up an account on the laptop for your child

Guide 3: How to onboard the device (Setting the device up for use at school)

PLEASE NOTE: It is vital that your student account is set as an Administrator of the device. If you are unsure how to do this, please read “Guide 2 Setting up an account on the laptop for your child” This step is vital to ensure connectivity to the network. Devices sent to school where the student does not have administrator access will not function correctly.





# 2026 BYOD – Minimum Device Specification Requirements

**Before purchasing a device, please consider the options attached. These devices are built for education and offer accidental damage protection. Unlike majority of store purchased laptops. “BYOD Ready” does not mean education grade.**

<https://pallarass.eq.edu.au/curriculum/bring-your-own-device/3-laptop-selection>

Education grade laptops are built and designed stronger, most retail stores do not sell these devices. They tend to offer greater warranty periods along with greater reparability unlike most store-bought laptops. Lenovo laptops from Learning With Technologies come with the option of a 3 year Education warranty\* for additional piece of mind. They also offer great discounts on recommended accessories

## **We only use Windows devices for BYOD At Pallara State School**

**The following devices will not be accepted as a BYO Device:**

- **NO WINDOWS DEVICES WITH A QUALCOMM SNAPDRAGON CPU** ✗
- NO IPADS ✗
- NO APPLE MACS ✗
- NO CHROMEBOOKS ✗
- NO ANDROIDS TABLETS ✗
- DO NOT BUY MICROSOFT OFFICE ✗ (This comes free for Education Qld students)
- DO NOT BUY ANTI-VIRUS SOFTWARE OR SUBSCRIPTIONS (Often paid for Anti-Virus can cause issues with our network and is not recommended)

## **LAPTOP MINIMUM SPECIFICATIONS:**

- **WINDOWS 11 Devices ONLY (Windows 10 and below are no longer supported)**
- **Touch screen**
- **Attached physical keyboard (for example, not a Surface tablet)**
- **Screen Size:** 11” – 14” for ease of use in school (no smaller & please consider the weight for your child when choosing bigger screens)
- **CPU:** Minimum Celeron/N100 (for Year 1-3), Minimum Pentium/N200, i3, Ryzen 3 (Middle & Senior grades)
- **RAM:** 8GB Minimum (Anything with 4GB or lower is highly discouraged due to performance implications)
- **Storage:** Solid State Hard Drive (SSD) – 128 Gb minimum (**Avoid anything with eMMC storage**)
- **Battery life:** 6+ hour battery life
- Device **must** support 5GHz WiFi
- Cordless mouse & ‘over the head’ type headphones

## **PROTECTIVE CASE RECOMMENDATIONS:**

- Case size should match screen size of laptop (or close as possible) – Snug and safe – Like a bike helmet
- **Hard shell or cases with rigid corners are recommended minimising damage in the event of a drop**
- Zipper
- ‘GRID’ by Targus (recommended choice). Targus Contego/vertical slipcasses, STM Ace Armour, THULE, GRID cases are Mil-Spec – 4ft drop safe
- Handles/shoulder straps recommended
- **Ridged corners help minimise the chance of a broken screen. This is the most likely cause of damage to student devices.**

\*Lenovo 3 Year Onsite Standard Education Warranty - 1 Year on Battery - covers drops, liquid spills, and structural failures - unlimited repairs but if unit is replaced warranty ends. No cost applies for repairs.





**Recommended BYO laptop for Pallara SS Students**  
**Order from: [pallara.orderportal.com.au](https://pallara.orderportal.com.au)**  
**Price includes a 3 Year Onsite Standard Education Warranty\***

(Prices accurate as of 21/10/2024)

3 Year Onsite Standard Education warranty is selected by default. **Please check all options before purchasing.**

### Recommended Junior Device:

#### Lenovo 500w Yoga Gen 4 - 12.2" N100 8GB 128GB



**In Stock**

**\$759.00 inc GST**

12.2" Touch Notebook designed with robustness in mind for education use with the new N series processor and an Active Stylus for writing.

3 Year Onsite Standard Education Warranty  
- 1 Year on Battery - covers drops, liquid spills, and structural failures - unlimited repairs but if unit is replaced warranty ends. No cost applies for repairs.

##### SCREEN

**12.2"**

Touch Screen (1920x1200)

##### HARD DRIVE

**128GB**

SSD

##### CPU



Intel Processor N100 - 4 Cores, Up to 3.4GHz

##### BATTERY



Up to 10 Hours Battery

##### MEMORY

**8GB**

DDR5

##### WEIGHT

**1.28KG**

### Recommended Senior Device:

#### Lenovo 500w Yoga Gen 4 - 12.2" N200 8GB 256GB



**In Stock**

**\$933.00 inc GST**

12.2" Touch Notebook designed with robustness in mind for education use with the new N series processor and an Active Stylus for writing.

3 Year Onsite Standard Education Warranty  
- 1 Year on Battery - covers drops, liquid spills, and structural failures - unlimited repairs but if unit is replaced warranty ends. No cost applies for repairs.

##### SCREEN

**12.2"**

Touch Screen (1920x1200)

##### HARD DRIVE

**256GB**

SSD

##### CPU



Intel Processor N200 - 4 Cores, Up to 3.7GHz

##### BATTERY



Up to 10 Hours Battery

##### MEMORY

**8GB**

DDR5

##### WEIGHT

**1.28KG**



## Recommended BYO laptop for Pallara SS Students (Suitable for all year levels)

### Order from: One-Education.org

(Default 2 year warranty + \*\$98 to add 2 years of accidental damage protection)



#### Infinity Laptop: A More Affordable Option

The Infinity laptop by One Education helps to alleviate the biggest cost challenges of BYOD. Here's how the Infinity delivers incredible value-for-money:



**Affordability:** The price of the Infinity laptop is within reach for many families. The device comes in affordable and with excellent base specifications, reducing the burden of purchasing the required technology for education.

**Reliable Performance:** Despite its accessible price, the Infinity laptop will run essentially any software needed for your child's learning. It is designed to work seamlessly with any modern version of Windows. It is also built to be upgradeable and repairable, ensuring a reduced Total Cost of Ownership.

**\*To add Accidental damage protection (Highly encouraged) first go to this link and add to card before proceeding to add the laptop to the cart**

<https://www.one-education.org/discount/PSSBYOD?redirect=%2Fproducts%2Finfinity-accidental-damage-protection>

Prices accurate as of 21/10/2024

Product	Price	Quantity	Total
 Infinity	\$620.00	- 1 +	\$620.00
 Infinity Accidental Damage Protection	\$98.00	- 1 +	\$98.00

## SPECIFICATIONS



#### BATTERY 45 Wh

Full school day and fast charging through DC-IN or USB-C



#### PROCESSOR

Intel N200, as quick as the previous generation i5



#### RAM UP TO 16 GB

Modular, upgradeable any time



#### DUAL CAMERA

Screen and keyboard HD sensors



#### SSD UP TO 512 GB

Modular, upgradeable any time



#### 11.6" IPS DISPLAY

Sharp graphics, capacitive touch



Available through Learning with Technologies when purchasing a device. Contact the school for more information about suitable laptops bags.

### Recommended laptops cases

#### 11-12.2" Laptops



[Click to view more info](#)

**Targus TBS812GL 11-12.2"**  
**Contego Armoured**  
**Slipcase**

\$45.10



[Click to view more info](#)

**Targus TBS712GL 11-12.2"**  
**Vertical Rugged Slipcase**  
**with shoulder strap**

\$34.64



[Click to view more info](#)

**LENOVO 500E / W GEN 4**  
**RUGGED SNAPON CASE**

\$50.60

#### 13-14" Laptops



[Click to view more info](#)

**STM ACE ARMOUR**  
**(13"-14") - BLACK**

\$44.00



[Click to view more info](#)

**Targus TBS813GL 13.3"**  
**Contego Armoured**  
**Slipcase - Does fit some**  
**14" devices**

\$44.00

### Additional Protection options for Lenovo 500W

### Lenovo Standard Education Warranty information

More info at: <https://pallara.orderportal.com.au/Brochures/EducationWarrantyFlyerapanz.pdf>

#### What does the **Lenovo Education Warranty** cover?\*



Drops, liquid spills, bumps and structural failures



Damage to the integrated LCD screen



Electrical surges

#### Why choose **Lenovo Education Warranty**?

FEATURES	Basic Support	Standard Education Warranty Onsite
Call center support for basic troubleshooting, out-of-the-box support and technical issues	✓	✓
Onsite Support	X	✓
Covers Drops, spills, bumps, and structural damage	X	✓
Technical support available	Level-1 Basic Support	Level-1 Basic Support
Available through phone and email	9am to 5pm AEST	9am to 5pm AEST

Lenovo Education Warranty Service. AP Services. March 2024 T&Cs

Not covered by Education Warranty: cosmetic damage (scratches, dents, or cracks not affecting product functionality or structural integrity); equipment loss or failures due to use outside normal operating conditions; data loss or business interruption; intentional damage and misuse; removal or alteration of parts/accessories; theft; fire damage; damage to peripherals or third-party products (even if sold by Lenovo).

If entitled to onsite warranty service under the Limited Lenovo Warranty, and the Service Provider determines your Product can be repaired onsite, the Service Provider will repair or exchange your product at your location. Some repairs may be completed at a service center; if so, the Service Provider will send the product to the service center at its expense. If repair cannot be completed at the first onsite visit, the system will be shipped to Lenovo's Service Center. Onsite service may not be available in all regions.

Limitation of one replacement product. If the cost per claim exceeds the price of the product, the product will be replaced at Lenovo's discretion.

Lenovo Education Warranty can only be purchased within 30 days from hardware purchase

Replacement systems do not carry Education Warranty coverage and should be repurchased on the new replacement.

Service available in the country or region where Education Warranty coverage is purchased and is not transferable should the system travel to another country.

Components not covered: batteries, external peripherals, and accessories (including optional features not installed by Lenovo at time of product purchase), external keyboards, mice, digitizer pens and styluses, cases and folios, power cords and adapters, cradles, docking stations, printers, scanners, external drives, software (preloaded or purchased separately), tape, disks, CDs, DVDs, film or other media, and third-party products (those not bearing Lenovo logo), even if sold by Lenovo.

Products and offers are subject to availability. Lenovo reserves the right to alter product offerings and specifications, at any time, without notice. Lenovo makes every effort to ensure the accuracy of all information but is not liable or responsible for any editorial, photographic, or typographic errors. Images are for illustration purposes only. For full Lenovo product, service, and warranty specifications, visit [www.Lenovo.com](http://www.Lenovo.com). Lenovo and the Lenovo logo are trademarks or registered trademarks of Lenovo. Other company, product, and service names may be trademarks or service marks of others.



## Frequently asked questions

### Do I need to let the school know if my child has been away?

Yes – Parents must let the school know the reason for the absence, if not beforehand, then within two days of their child's return to school.

### Can I take my child out of school for family or social occasions?

No – You should arrange leisure activities, visits to family and friends and shopping trips outside of school hours.

### Does the occasional day away from school really affect my child's education?

Yes – Research shows that in Queensland, higher student attendance is associated, on average, with higher student achievement.

### What should I do if my child refuses to go to school?

Contact the school as soon as possible for advice and support.

## For further information and support

Talk with your school about your child's attendance or any support you may need.

Visit the Department of Education, Training and Employment's website:

[www.education.qld.gov.au/everydaycounts](http://www.education.qld.gov.au/everydaycounts)

## Every day counts

School attendance — responsibilities of parents and caregivers





## Every day counts

**Every day counts...** because children achieve better when they attend school all day, every day

**Every day counts...** because going to school means getting a better chance at life

**Every day counts...** because school helps children build social and emotional skills such as communication, teamwork and resilience

**Every day counts...** because going to school is a legal requirement

## What the law says

Under the law, you must make sure your child is enrolled and attends school on ALL school days unless you have a reasonable excuse.

You must not keep your child away from school for minor reasons.

Under the law, schools must monitor attendance of students and follow up with parents and caregivers any unexplained absences.

## What you can expect from the school

- Monitoring of student attendance
- Letting you know if your child is not at school
- Following-up any unexplained absences as soon as practicable, but within three days of any unexplained absence
- Effective teaching strategies to engage your child in learning
- Strategies to help you to encourage your child to go to school

## Support for families

If your child does not want to go to school, or is missing school without you knowing, contact your school immediately for assistance and support.



# Pallara State School

## Uniform Policy



At Pallara State School, we actively encourage our students to take pride in themselves and their school. One way in which this is achieved is through adherence to the school's dress standards. Pallara State School is a 'Uniform School' where students are expected to present in full school uniform every day. A consistent presence of full uniform is a very powerful way to create a sense of pride and school community. High expectations around uniform lead to a greater focus on learning and positive student interactions. As the parent/carer and provider for your child, we seek your support to ensure your child is dressed everyday in the appropriate school uniform in line with this policy.

Clothing or items that are '**offensive or likely to disrupt or negatively influence the normal operation of the school**' are not permitted. Students not wearing the uniform are required to bring an explanatory letter from their parents. Students wearing inappropriate clothing or apparel will be asked to dress appropriately and their parents/carers will be notified. Students not wearing school uniform will be ineligible to represent the school away from the campus, including excursions and sporting events.

### Uniform Range

Our range of school uniforms can be purchased from *The School Locker* Oxley store. It is open Monday to Friday 8:30am-5:00pm and Saturday 9:00am-3:00pm. Online orders can be made at <https://theschoollocker.com.au>.

Our school colours of **bottle green** and **gold** combine to create a modern, composed and distinctive look. Your child will require the following items, which are explained below. It is important **all items are named** so they can be returned to their owner if lost. The school has a lost property section which students and parents are encouraged to check if items are misplaced.

Formal Uniform	White socks (not low-cut)	Pallara Library bag
Sports Uniform	Full black closed-in shoes	School bag of your choice
Sports House Polo Shirt	School bottle green wide-brimmed hat (reversible house colour)	

### Formal Uniform

Students are to wear the formal uniform on all days except the day your child has their HPE lesson (and Fridays), when they may wear the sports uniform. It is expected that all students wear their formal uniform for school photos. The formal uniform is as follows.

**Girls** – Green, gold and white checked dress or checked blouse with green skirt or shorts.

**Boys** – Green, gold and white checked shirt and green shorts.

### Shoes and socks

All students are required to wear white socks (not low-cut) with full black, closed-in shoes at all times, unless directed otherwise by the teacher for a specific activity. There are to be no other colours on shoes (e.g. no white soles, stripes or ticks). We recommend sports shoes as students are active during the day. Shoes can be either Velcro or lace up. Shoes with heels or platforms, thongs and sandals are not suitable. Non-wearing of shoes could be '*unsafe for the student or others*'. A student will be asked to replace their shoes and will be excluded from all outdoor activities until suitably attired.

### Sports Uniform

Students are required to wear the sports uniform on the day of their HPE lesson, as well as sporting events. The sports uniform is as follows.

**Girls** - Green and gold sports polo shirt with school logo and green shorts, skirt or skirt.

**Boys** - Green and gold sports polo shirt with school logo and green shorts.

### Sports House Shark Shirt

Pallara State School has four sporting houses related to four sharks. Coloured polo shirts for each sporting house are available at The School Locker store. Students are permitted to wear this polo shirt each Friday and for sports carnivals when represent their sports house.

Mascot	House Name	House Colour	Mascot	House Name	House Colour
	<b>Makos</b>	<b>Blue</b>		<b>Hammerheads</b>	<b>Orange</b>
	<b>Threshers</b>	<b>Purple</b>		<b>Tigersharks</b>	<b>White</b>

### School Hat

Pallara State School follows the Sun-Safe guidelines of the Queensland Cancer Society; therefore, it is school policy that children wear the **Pallara bottle green, wide-brimmed school hat** for all outdoor activities in the sun including break times. This hat is reversible with the house colours inside to be worn for sports carnivals where students are representing their house. Please take note of your child's house colour before purchasing. Non-wearing of a hat is *'likely to result in a risk to the health of the student'*. Students without a hat must remain in shaded / under-covered areas during breaks and will be excluded from sporting activities or other activities that involve being out in direct sunlight. Caps are not permitted.

### Winter Uniform and Other Clothing

In the colder months, students are encouraged to wear the Pallara green and gold zip-up sports jacket or green Pallara logo jumper; however, any form of bottle green under or outerwear is acceptable (e.g. jumpers, tights, stockings, long pants, long sleeve shirts etc). No other colours are permitted. Religious clothing such as hijabs or turbans must be bottle green. All items listed above can be purchased from other stores.

### Hair

To reduce the transfer of head lice, long hair is to be tied back, plaited or braided with suitable hair accessories to match the school colours (bottle green, gold, black, white). Long hair that is not tied back could be *'unsafe for the student'*. Dyed hair and inappropriate hairstyles such as mohawks and tracks are not permitted as they do not reflect the values of the school are *'likely to disrupt, or negatively influence the normal operation of the school'*. Parents/carers will be notified if this is the case.

### Library Bag

The Pallara Library bag is required to transport Library books, homework and letters to and from school. All Prep students whose parents pay the School Resource Scheme (SRS) fee will be gifted a Library bag from the school.

### School Bag

The only part of the Uniform Policy that is not actively enforced is the school bag. A Pallara school bag is available for purchase from the uniform shop; however, this is not compulsory.

### Jewellery

Students may wear a watch and small plain earrings, such as studs or sleepers. Children who wear watches or jewellery to school are responsible for their safety and protection from damage or loss. Smart watches or similar devices are not permitted. A student may wear a medical bracelet or medical necklace. Please notify administration if this is the case and submit a medical plan. Any other jewellery may be *'unsafe for the student or others'* as it could become caught in equipment or come into contact with another student causing injury. For safety purposes, jewellery items may need to be removed for some activities (e.g. sports). The wearing of necklaces, bracelets and keys on lanyards is not appropriate. Parents may negotiate with the Principal the wearing of a religious items of significance, stating their recognition of possible injury and indemnifying the school. A student wearing other jewellery will be asked to remove the item and if necessary, it will be taken to the office for safekeeping for the remainder of the day.

### Nail polish

Nail polish is not part of the school uniform. Only clear nail polish is to be worn. Students wearing coloured nail polish will be asked to remove it by the next day and their parents/carers will be notified.

### Valuables

Students are not permitted to bring valuable items to school unless accompanied by a parent/carer and for a specific purpose (e.g. show and tell). Valuables such as electronic games, toys, jewellery etc. are not permitted at school. Mobile phones must be handed in at the office at the start of the day and collected at the end of the day.

